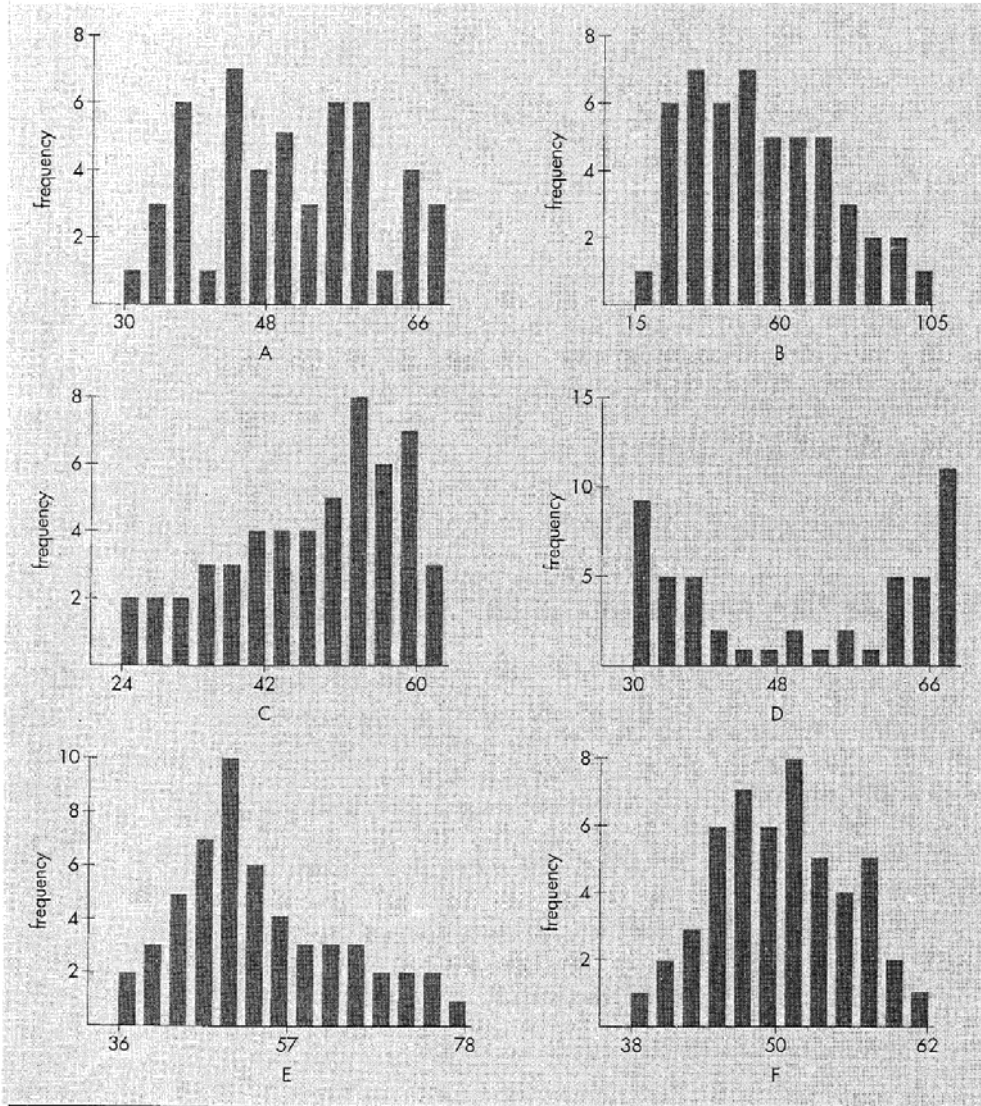
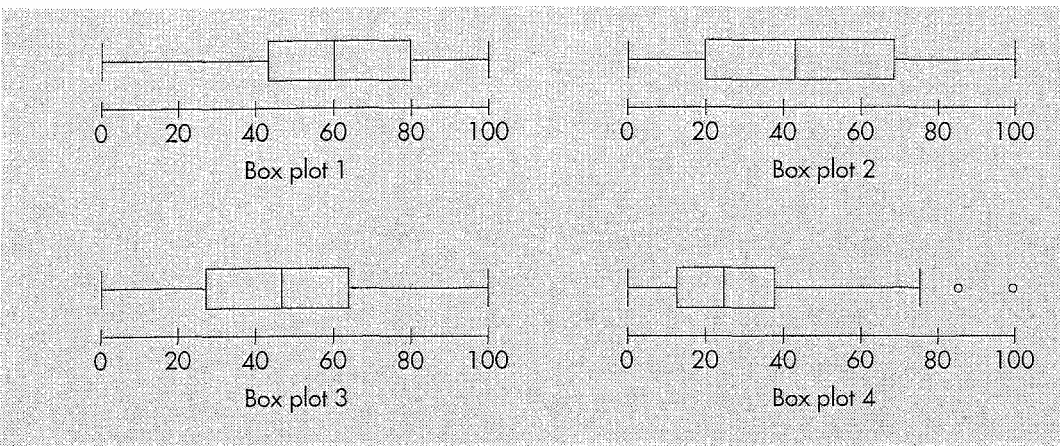
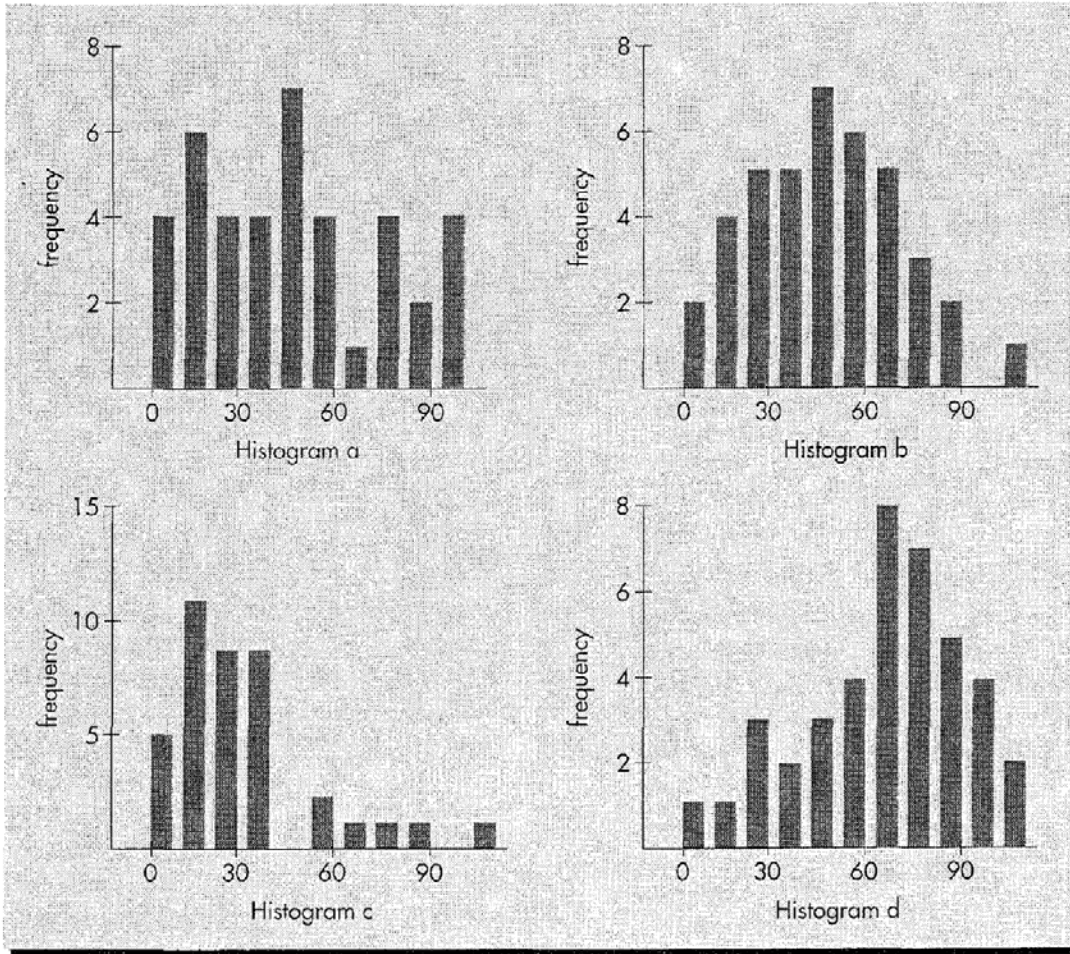


1. Consider the following group of histograms and summary statistics. Each of the variables (1–6) corresponds to one of the histograms.



Variable	Mean	Median	Standard Deviation
1	50	50	10
2	50	50	15
3	53	50	10
4	53	50	20
5	47	50	10
6	50	50	5

2. Consider the following group of histograms and box plots.



Each box plot corresponds to one of the histograms. Match the box plots to the histograms, and explain how you made your choices.

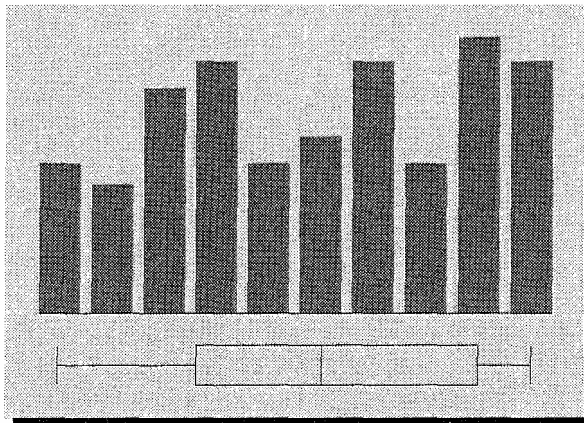
Consider the following two variables:

A. age at death of a sample of 34 persons;

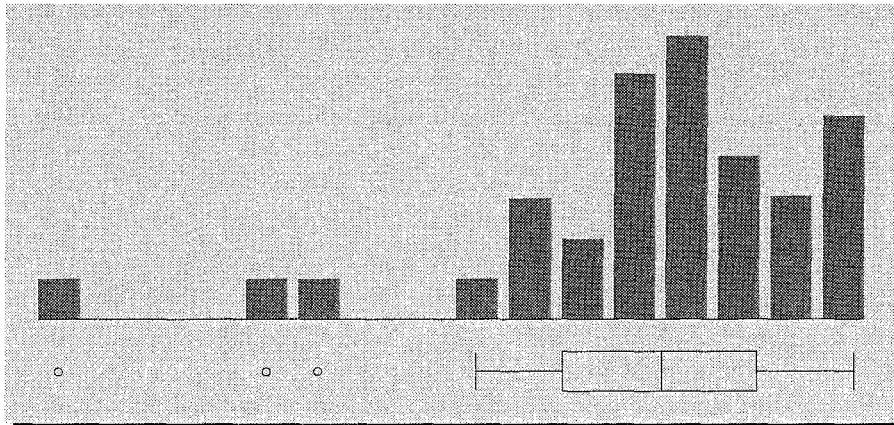
B. the last digit in the social security number of each of 40 students.

We wish to match these variables to their graphs:

I.



II.



Consider the following list of variables and graphs:

- a. scores on a fairly easy examination in statistics;
- b. number of menstrual cycles required to achieve pregnancy for a sample of women who attempted to get pregnant. Note that these data were self-reported

from memory. (Data from S. Harlap and H. Baras (1984), "Conception—waits in fertile women after stopping oral contraceptives," *Int. J. Fertility*, 29:73–80.)

- c. heights of a group of college students;
- d. numbers of medals won by medal-winning countries in the 1992 Winter Olympics;
- e. SAT scores for a group of college students.

